



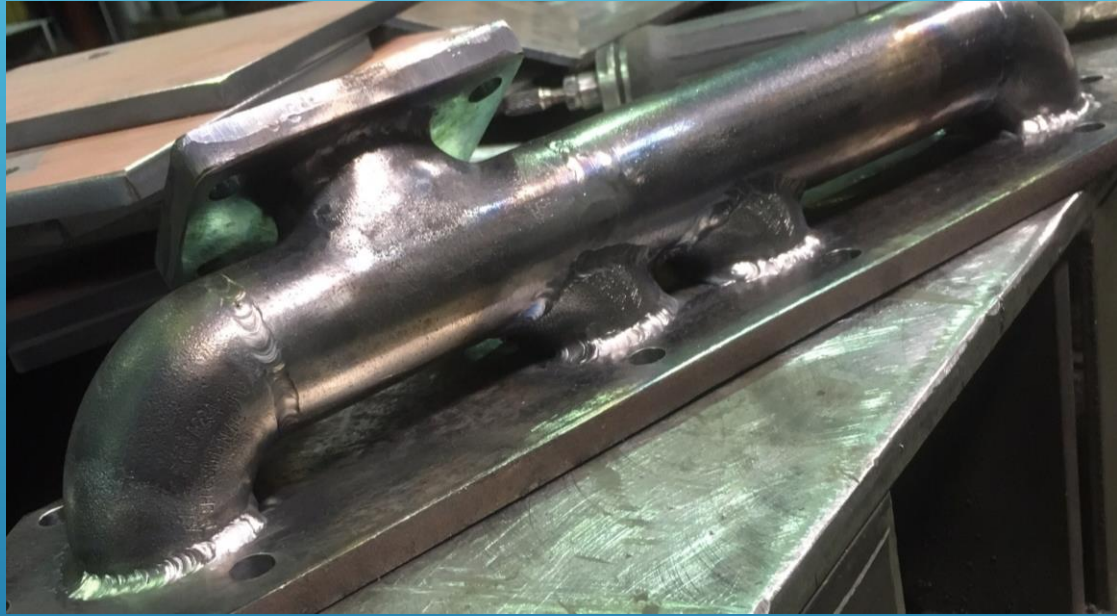
MILENA ROSELL SVETSANSVARIG IWS

-Yrkesvux

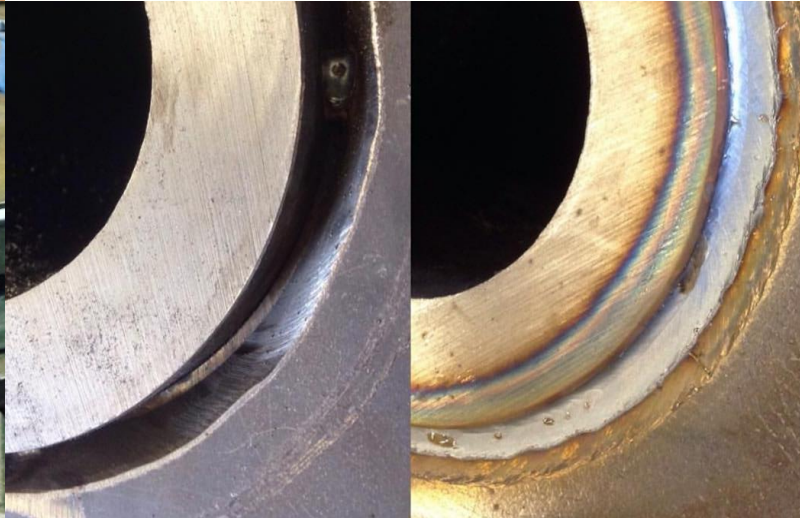
- IW

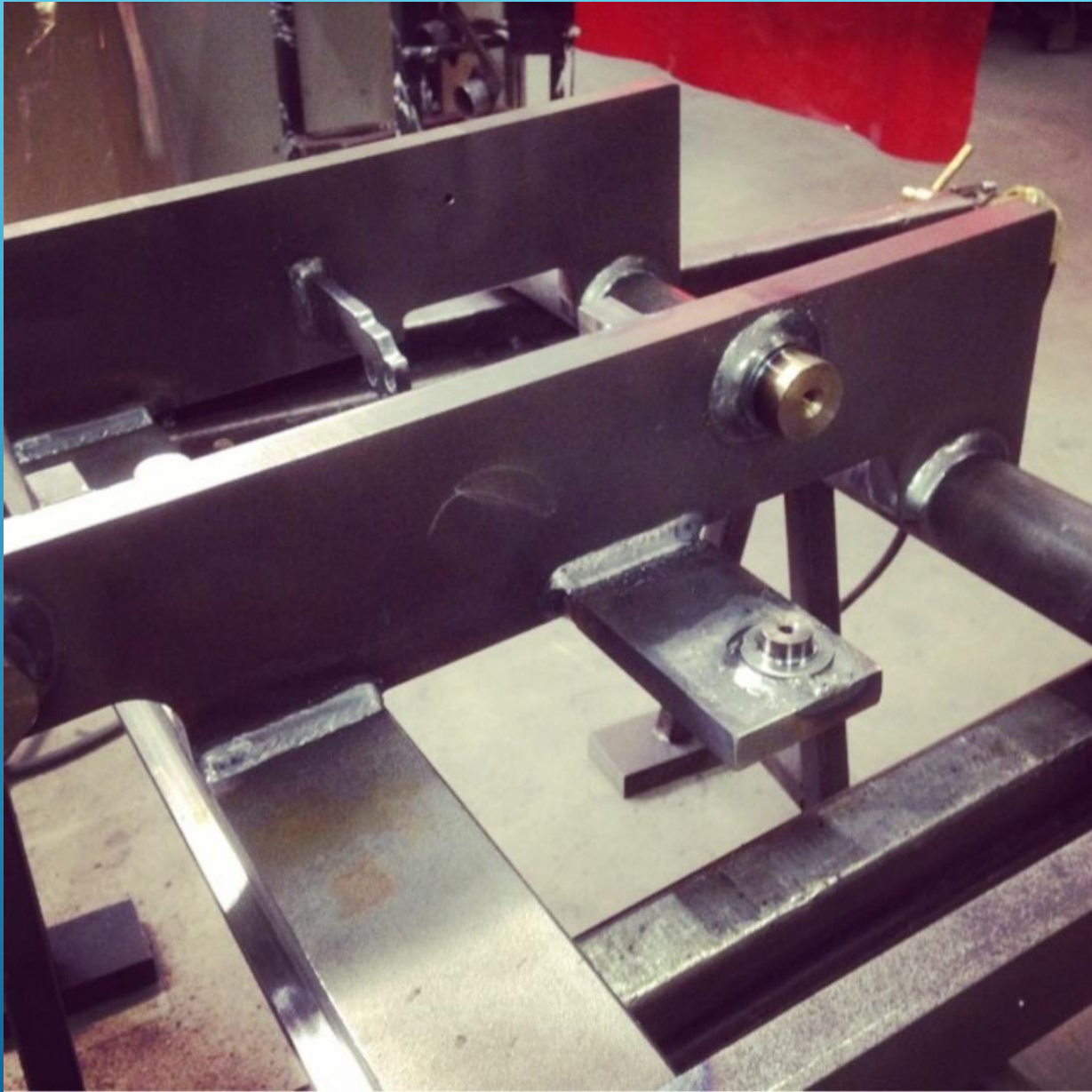
▶ Min väg till att bli svetsare

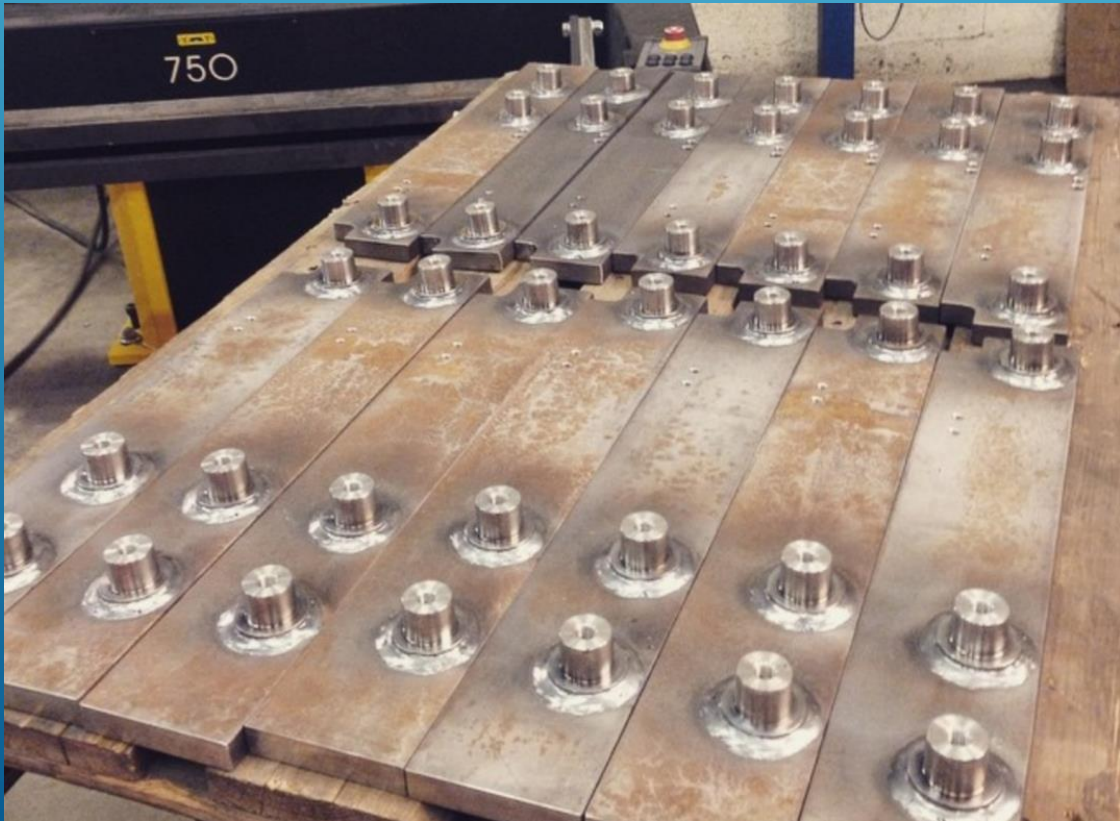












Fräsning



- IWS
 - MT-NIVÅ 2 (MAGNETPULVERPROVNING)
 - SVETSANSVAR
- 
- A series of several parallel white lines of varying lengths, slanted diagonally from the bottom-left towards the top-right, located in the lower right quadrant of the slide.







Skyllberg Bruk
AB



Skyllberg
Industri AB

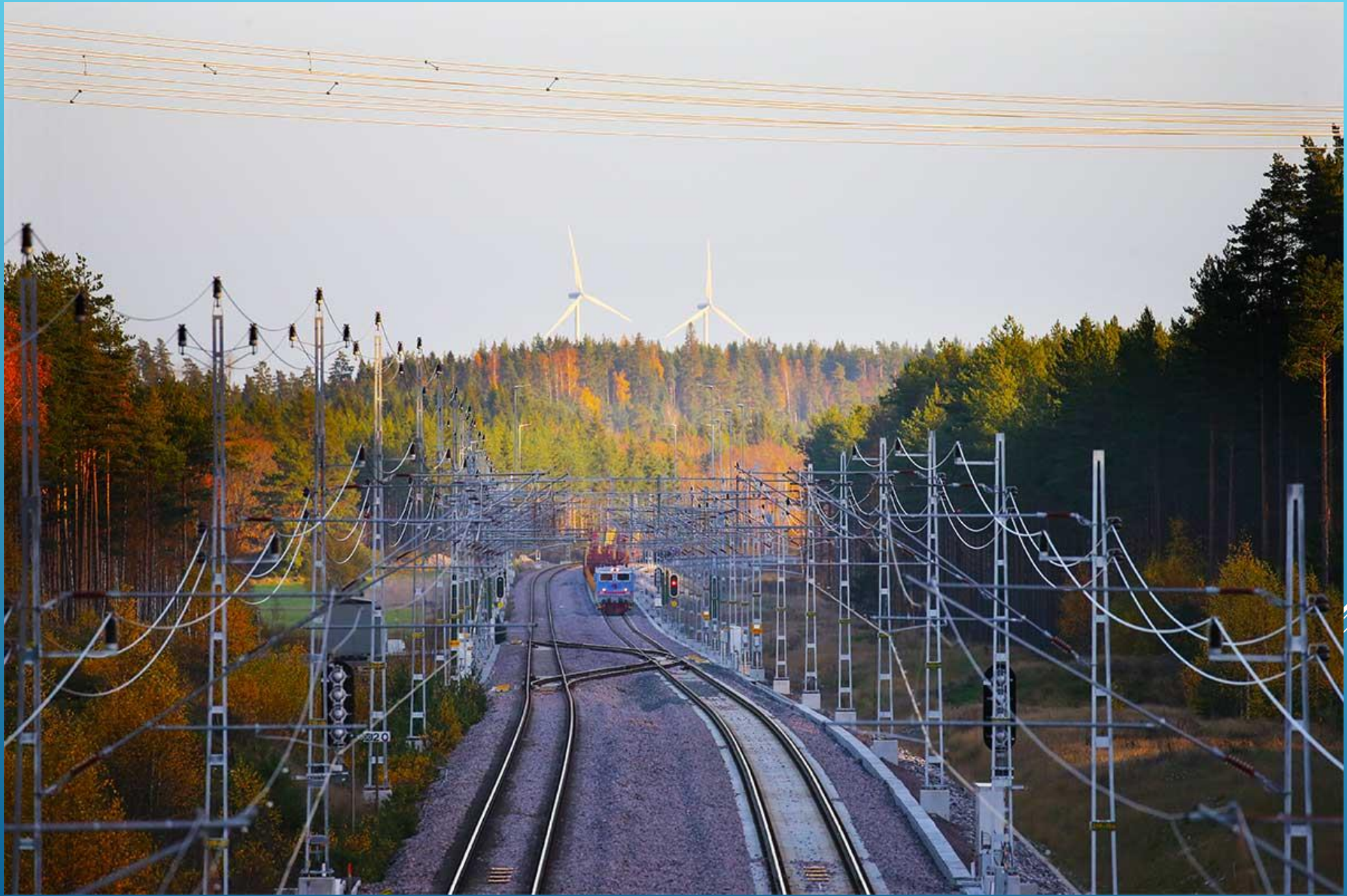
Skyllberg
Kraft AB

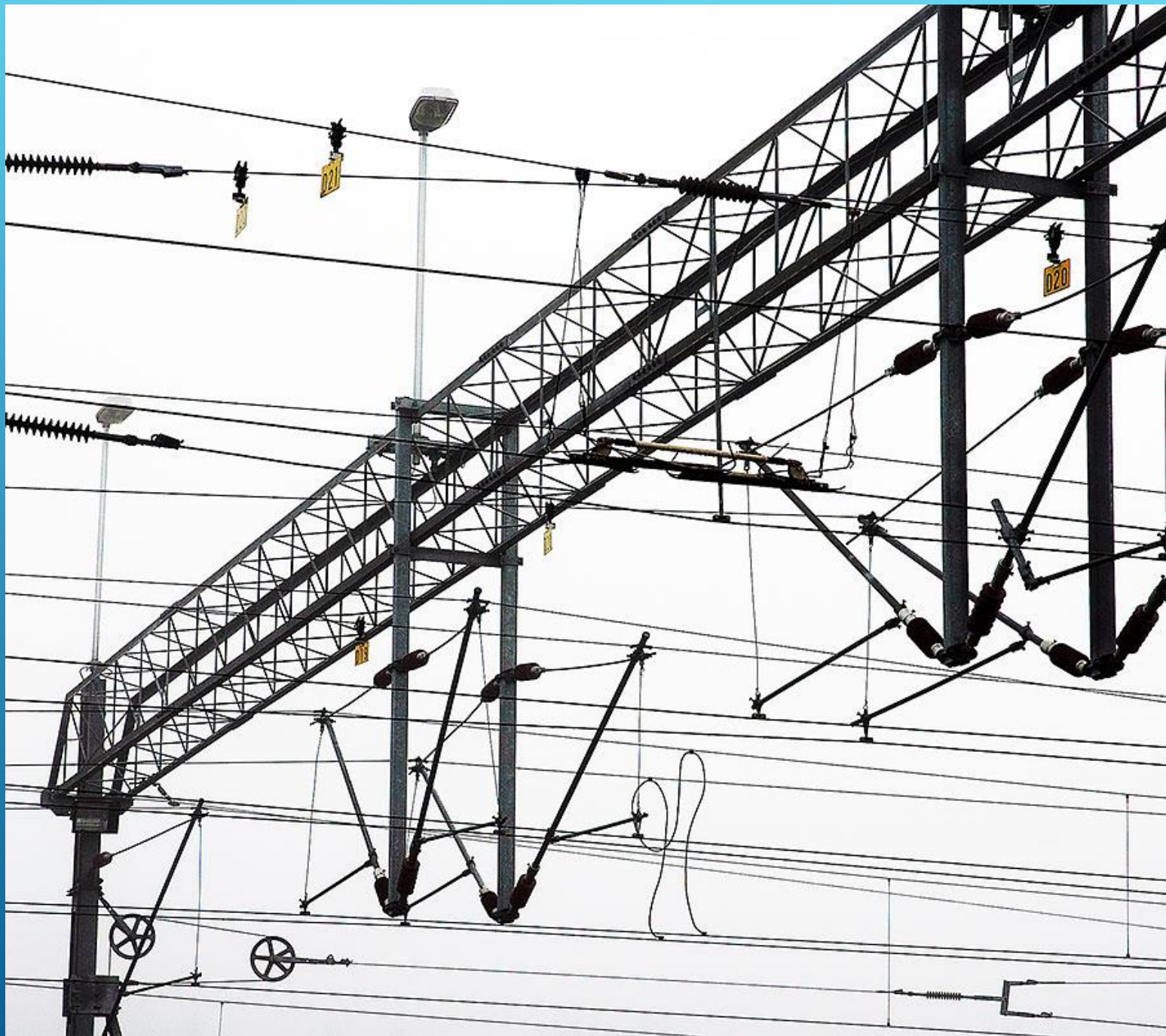
DEFAB

Nils Ahlgren
AB















SS EN ISO 9001 KVALITETSLEDNINGSSYSTEM

SS EN ISO 14001 MILJÖLEDNINGSSYSTEM

SS EN 1090-2 UTFÖRANDE AV STÅLPRODUKTER

EXC 3 UTFÖRANDEKLASS 3


SS EN ISO 3834-2

KVALITETSKRAV FÖR SMÄLTSVETSNING- OMFATTANDE
KVALITETSKRAV

MITT LIV SOM SVETSANSVARIG

- Övervakning
 - Kontroll
 - Instruktioner
 - Svetsdatablad
 - Daglig styrning
 - Kundmöten
 - Reklamationer
 - Fortbildning
- 
- A decorative graphic consisting of several parallel white lines of varying thicknesses, extending diagonally from the bottom left towards the top right of the slide.

KVALITET

- Säkerhet
 - Kvalitet
 - Leverans
 - Ekonomi
- 
- A series of several parallel white lines of varying thicknesses, slanted diagonally from the bottom-left towards the top-right, set against a blue gradient background.



100% VT- VISUELL KONTROLL

5% MT- MAGNETPULVERPROVNING

SS EN ISO 9606-1

ALLA SVETSARE CERTIFIERADE

A series of several parallel white lines of varying thicknesses, slanted diagonally from the bottom left towards the top right, set against a blue gradient background.



- ▶ Förvärmning
- ▶ WPQR



KVINNOR



514 /14 356 Svetsare= 3,6%

33/2015 IWS= 1,6%

FRAMTIDEN

